

EPIC

EFFECTIVE PLANNING AND
INNOVATIVE COMMUNICATION

EPIC 'Ohana Conferencing
is a neutral,
non-profit organization.

We are not part of CWS.

For additional information,
please contact us at:

EPIC, INC. OFFICES:

OAHU
1130 N. Nimitz Highway, Suite C-210
Honolulu, Hawai'i 96817
Phone: (808) 838-7752
Fax: (808) 838-1653

HILO
101 Aupuni St., Suite 109
Hilo, Hawai'i 96720
Phone: (808) 961-9880
Fax: (808) 961-9887

Toll-Free: (866) 636-1644
Email: epic@epicohana.org
www.epicohana.org



MISSION STATEMENT

Families are the foundation of our community, and their well-being is inextricably linked to the health and prosperity of the community, state, and nation. EPIC transforms the culture of child welfare practice through a respectful, collaborative, solution-oriented process that protects children, strengthens families, and enhances the health of the community.



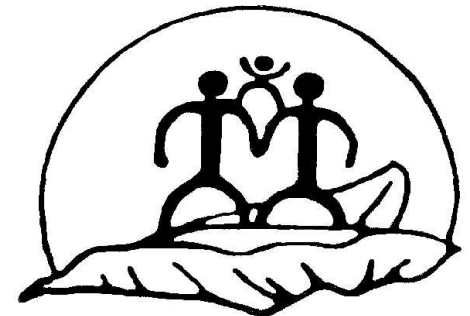
EPIC, INC.
'OHANA CONFERENCING

OAHU
1130 N. Nimitz Highway, Suite C-210
Honolulu, Hawai'i 96817

EPIC, INC.

'Ohana Connections

*Empowering Hawai'i's
foster-youth through
family finding and
the rebuilding of
family bonds*



‘Ohana Connections

WHAT IS EPIC’S ‘OHANA CONNECTIONS PROGRAM?

‘Ohana Connections is a program whose mission is to:

- Find and engage family members and other kinship family for every child entering foster care.
- Nurture and support family connections for every child in foster care.
- Help find family for children and youth who are in permanent care with no family connections.

WHAT IS THE UNDERLYING BELIEF OF ‘OHANA CONNECTIONS WORK?

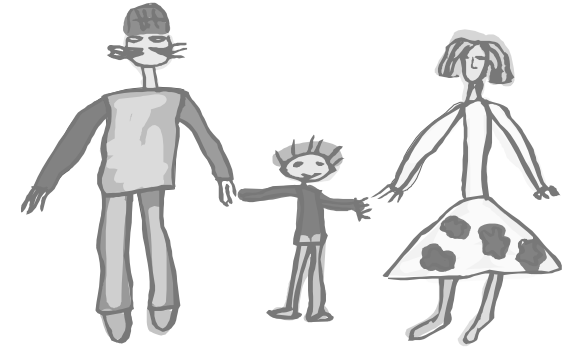
Every child entering foster care has a right to maintain their family connections.



WHAT IS INVOLVED IN ‘OHANA CONNECTIONS WORK?

3 STAGES

- **Discovery:** Search for family and kinship family members of children and youth under the Department of Human Services foster custody or permanent custody.
- **Engage:** Contact these family and kinship family members to establish family connections with the child or youth by communicating with and meeting the child or youth in foster care.
- **Planning:** Bring together the child/youth and family/kinship family, as well as the child welfare services (CWS) case worker, Guardian Ad Litem, and other significant people to develop a plan to support the child/youth in the important aspects of the child/youth’s life. These aspects include finding a permanent home for the child, education, social relationships, employment, housing.



DO YOU STILL HAVE QUESTIONS?

Please contact us with any questions, comments, concerns, etc. at:

OAHU

EPIC, Inc. ‘Ohana Conferencing
1130 N. Nimitz Highway, Suite C-210
Honolulu, Hawai‘i 96817
Phone: (808) 838-7752
Fax: (808) 838-1653

HILO

EPIC, Inc. ‘Ohana Conferencing
101 Aupuni St., Suite 109
Hilo, Hawai‘i 96720
Phone: (808) 961-9880
Fax: (808) 961-9887

Toll Free: 1-866-636-1644
Email: epic@epicohana.org