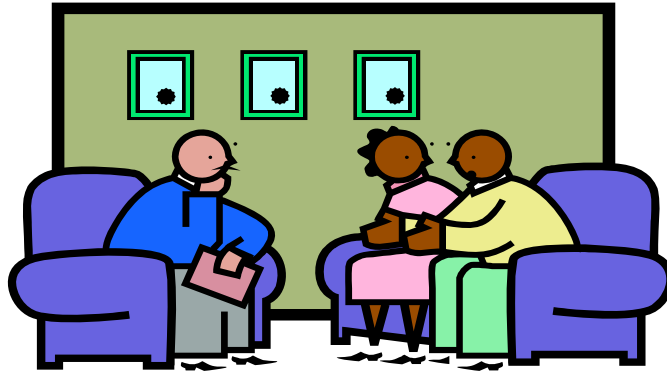


PREPARATION OF THE PRIMARY FAMILY



- 1. Look at the set of behaviors that must change for the child to go home.**
- 2. Parent must know what you will be assessing in visitation.**
- 3. Parent must have the opportunity to build on strengths while remediating needs.**
- 4. Assist parents to explore reasons behind the behavior.**
- 5. The families of children in placement operate on different agendas.**
- 6. Parents must be allowed to set parameters on who is included in visits.**
- 7. Assist and expect parents to plan visits.**
- 8. Work with parental strengths to keep the child safe.**