

# Child Welfare Law Update

## August 23, 2019

### Koolau Ballrooms

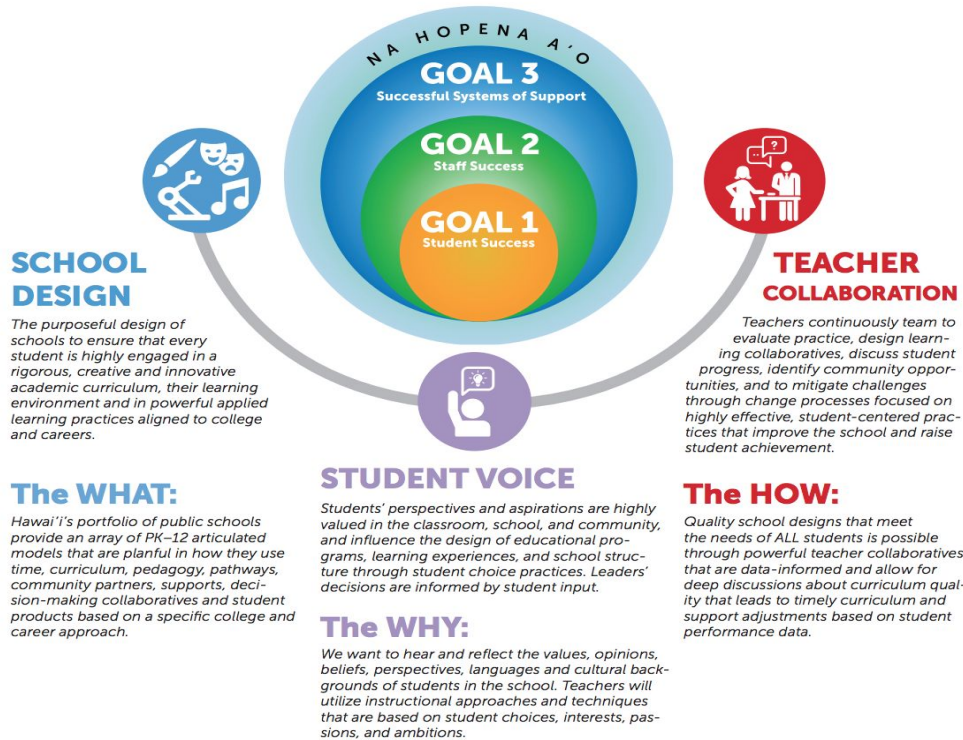


# Topics

- Hawaii DOE Strategic Plan and Demographics
- Every Student Succeeds Act (ESSA)
  - Reporting Requirements
  - Key Provisions of Ensuring Educational Stability
- Other projects related to Children in Foster Care
  - Data Sharing MOU
  - Foster Care Rights



# Strategic Plan SY 2017-2020



# Promise Plan 2020-2030

Hawai'i	<p>Students will be educated within a public school system that is grounded in HĀ, powers a multilingual society, and honors Hawai'i's local and global contribution.</p> <p><b>Nā Hopena A'o; languages; culture; context; place-based; safety &amp; total well-being</b></p>
Equity	<p>Students will experience strong relationships and supports that mitigate disempowering differences to enable them to thrive academically, socially, and civically.</p> <p><b>Access; personalization; community; closing achievement gaps; quality</b></p>
School Design	<p>Students will be immersed in excellent learning environments that are thoughtfully designed around a community's power to contribute to a thriving, sustainable Hawai'i.</p> <p><b>Core values; curriculum; infrastructure; magnets; college &amp; career; partners</b></p>
Empowerment	<p>Students will develop their authentic voice as contributors to equity, excellence and innovation, by providing input on what, how, and where they learn.</p> <p><b>Engagement; civic &amp; policy voice; tri-level leadership; discovery; choice</b></p>
Innovation	<p>Students will engage in rigorous, technology-rich, problem-solving learning that enables them to solve authentic community challenges and develop pathways to goals.</p> <p><b>Applied learning; design thinking; project-based learning; creativity</b></p>



# About the Hawai'i DOE

## 292 public schools

- 256 DOE, 36 charter
- 174 elementary, 41 middle, 34 high, 43 mixed grades
- 45 military-impacted schools
- 20 DOE schools that offer Pre-K
- **10,000 public school graduates annually**

## About 180,000 students

- 170K in HIDOE schools
- 10K in charter schools

**22,000 full-time employees,**  
with another 10,000 substitutes and casual employees.



O'ahu	183 schools
Hawai'i	56 schools
Maui	26 schools
Kaua'i & Ni'ihau	20 schools
Moloka'i	6 schools
Lana'i	1 school

# Hawai'i DOE snapshot

179,255 students

92,063 economic disadvantage (51.4%)

21,181 special education/needs (11.8%)

12,979 English Learners (7.2%)

12,344 military students (6.9%)\*

**MOST COMMON LANGUAGES:**

*Ilokano, Chuukese, Marshallese, Tagalog,  
Spanish, Japanese, Mandarin, Samoan*

**1,100 students in foster care (May 2019)**

SOURCE: Official Enrollment Count, 10/1/17; \*Statewide Student Enrollment System,



# Every Student Succeeds Act (ESSA)



# ESSA's Key Provisions for Ensuring Educational Stability

- Collaboration
- School Placement - Best Interest Determination (BID)
- Transportation
- Immediate Enrollment and Records Transfer





# Students in Foster Care

## Reporting Requirements, SY16-17

	LANGUAGE ARTS		MATH	
	Foster Care 353, 94% tested	All Students 96,590, 98% tested	Foster Care 352, 94% tested)	All Students 96,502, 98% tested
Exceeded	22, or <b>6%</b>	18,705, or <b>23%</b>	15, or <b>4%</b>	17,517, or <b>19%</b>
Met	73, or <b>21%</b>	28,221, or <b>30%</b>	61, or <b>17%</b>	21,777, or <b>23%</b>
Nearly Met	76, or <b>22%</b>	21,315, or <b>23%</b>	85, or <b>24%</b>	26,037, or <b>28%</b>
Did Not Meet	181, or <b>51%</b>	24,831, or <b>27%</b>	190, or <b>54%</b>	27,961, or <b>30%</b>



Foster Care Subgroup  
Graduation Rate  
Class of 2017

**76%**

All Students 83%

Source: State of Hawaii, ESSA Report,  
SY2016-2017



# Students in Foster Care

## Reporting Requirements, SY17-18

	LANGUAGE ARTS		MATH	
	Foster Care (358, 96% tested)	All Students 93,571, 98% tested	Foster Care (362, 97% tested)	All Students 93,660, 98% tested
Exceeded	30, or <b>9%</b>	20,705, or <b>23%</b>	15, or <b>4%</b>	17,493, or <b>20%</b>
Met	65, or <b>19%</b>	27,627 or <b>31%</b>	43, or <b>12%</b>	20,359, or <b>23%</b>
Nearly Met	77, or <b>22%</b>	19,571, or <b>22%</b>	87, or <b>25%</b>	24,370, or <b>27%</b>
Did Not Meet	177, or <b>51%</b>	21,302, or <b>24%</b>	208, or <b>59%</b>	27,419, or <b>31%</b>



Foster Care Subgroup  
Graduation Rate  
Class of 2018

**57%**

All Students 84%

Source: State of Hawaii, ESSA Report,  
SY2017-2018



# Other Projects & Next Steps

- Memorandum of Understanding - Data Sharing
- Rights of Children in Foster Care - translated into 14 languages
- Finalize directory of Educational Foster Care POCs
- Training
- Update website

